

# Latitude 14 3488

3000 Series

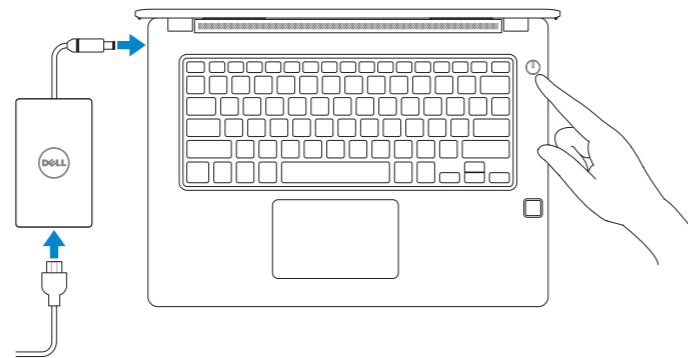
## Quick Start Guide

快速入门指南



### 1 Connect the power adapter and press the power button

连接电源适配器并按下电源按钮



### 2 Finish Windows 10 setup

完成 Windows 10 设置

#### Connect to your network

连接到网络

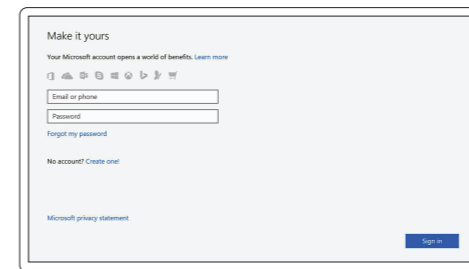


**NOTE:** If you are connecting to a secured wireless network, enter the password for the wireless network access when prompted.

**注:** 如果您要连接加密的无线网络，请在提示时输入访问该无线网络所需的密码。

#### Sign in to your Microsoft account or create a local account

登录您的 Microsoft 帐户或创建本地帐户



### Locate Dell apps

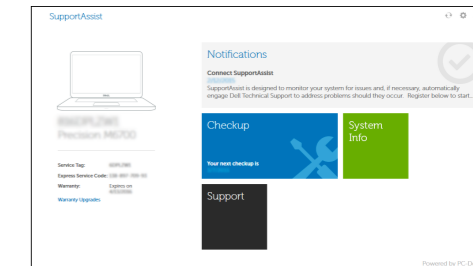
查找 Dell 应用程序



SupportAssist

Check and update your computer

检查和更新您的计算机



**Product support and manuals**

产品支持和手册

[Dell.com/support](http://Dell.com/support)

[Dell.com/support/manuals](http://Dell.com/support/manuals)

[Dell.com/support/windows](http://Dell.com/support/windows)

**Contact Dell**

与 Dell 联络

[Dell.com/contactdell](http://Dell.com/contactdell)

**Regulatory and safety**

管制和安全

[Dell.com/regulatory\\_compliance](http://Dell.com/regulatory_compliance)

**Regulatory model**

管制型号

**P79G**

**Regulatory type**

管制类型

**P79G001**

**Computer model**

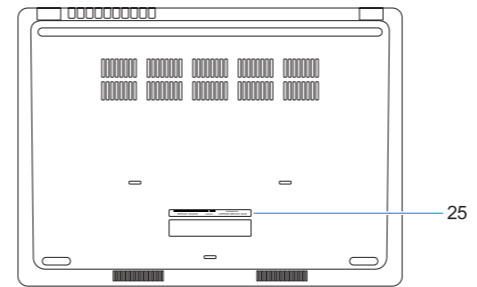
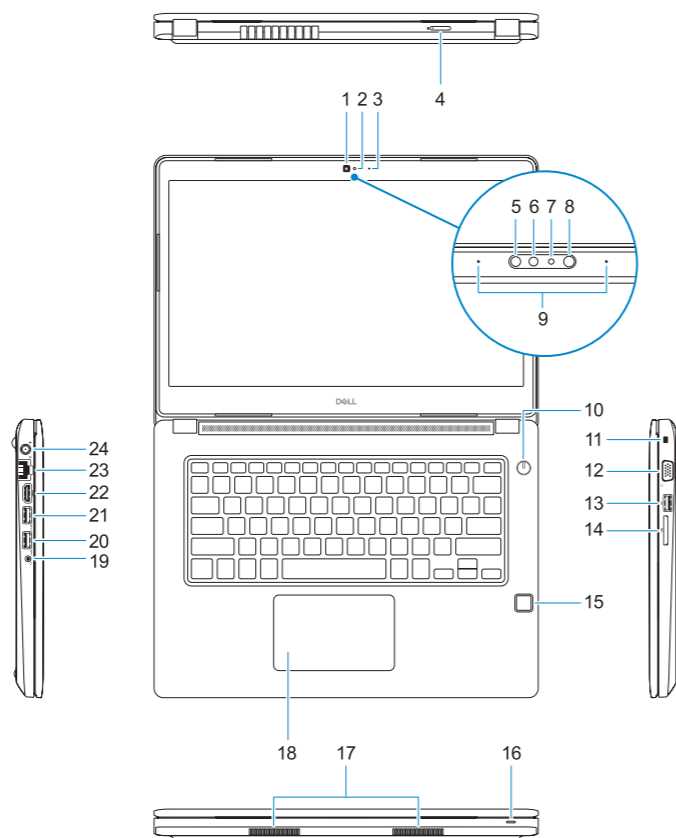
计算机型号

**Latitude 14-3488**

**Latitude 14-3488 系列**

**Features**

功能部件



- |   |                                   |                     |                               |
|---|-----------------------------------|---------------------|-------------------------------|
| 1. Camera                                   | 15. Fingerprint reader (optional) | 1. 摄像头              | 16. 状态指示灯                     |
| 2. Camera status light                      | 16. Status light                  | 2. 摄像头状态指示灯         | 17. 扬声器                       |
| 3. Microphone                               | 17. Speakers                      | 3. 麦克风              | 18. 触摸板                       |
| 4. SIM-card slot (optional)                 | 18. Touchpad                      | 4. SIM 卡槽 (可选)      | 19. 耳机/麦克风组合插孔                |
| 5. Infrared camera (Touch version only)     | 19. Headset/microphone combo jack | 5. 红外摄像头 (仅限触摸版)    | 20. USB 3.0 端口                |
| 6. Infrared emitter (Touch version only)    | 20. USB 3.0 port                  | 6. 红外发射器 (仅限触摸版)    | 21. USB 3.0 端口 (带 PowerShare) |
| 7. Camera status light (Touch version only) | 21. USB 3.0 port with PowerShare  | 7. 摄像头状态指示灯 (仅限触摸版) | 22. HDMI 端口                   |
| 8. Camera (Touch version only)              | 22. HDMI port                     | 8. 摄像头 (仅限触摸版)      | 23. 网络端口                      |
| 9. Microphones (Touch version only)         | 23. Network port                  | 9. 麦克风 (仅限触摸版)      | 24. 电源适配器端口                   |
| 10. Power button                            | 24. Power adapter port            | 10. 电源按钮            | 25. 服务标签                      |
| 11. Noble Wedge security-cable slot         | 25. Service Tag label             | 11. Noble 楔形防盗缆线孔   |                               |
| 12. VGA port                                |                                   | 12. VGA 端口          |                               |
| 13. USB 2.0 port                            |                                   | 13. USB 2.0 端口      |                               |
| 14. Memory card reader                      |                                   | 14. 内存卡读取器          |                               |
|   |                                   | 15. 指纹读取器 (可选)      |                               |

